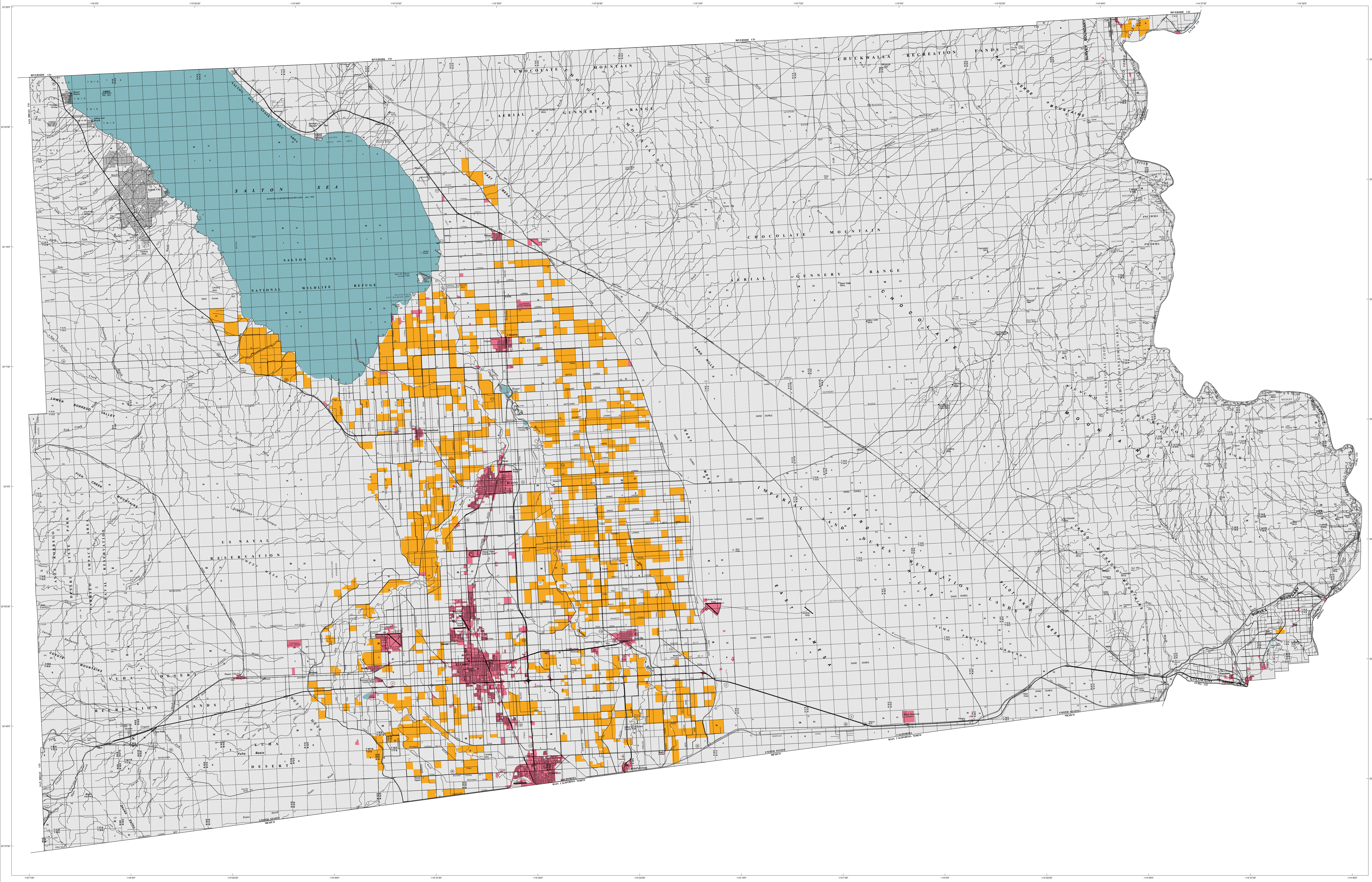




IMPERIAL COUNTY WILLIAMSON ACT FY 2016/2017

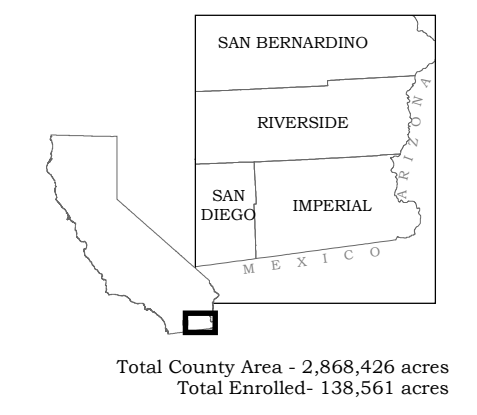
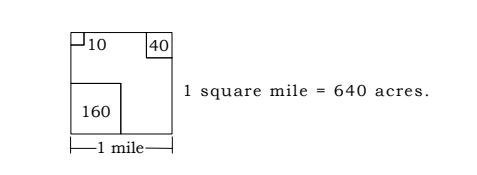
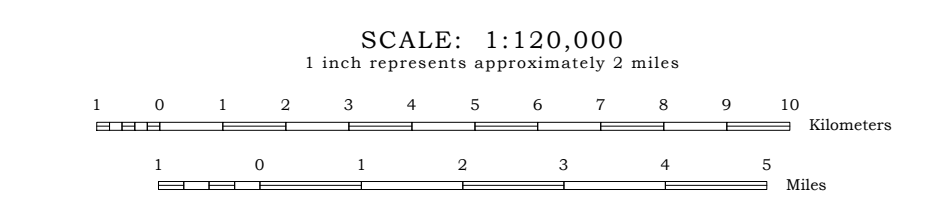


WILLIAMSON ACT- NON-RENEWAL
 Enrolled lands for which non-renewal has been filed pursuant to Government Code Section 51245. Upon the filing of non-renewal, the existing contract remains in effect for the balance of the period remaining on the contract. During the non-renewal process, the annual tax assessments gradually increase. At the end of the 9-year non-renewal period, the contract expires and the land is no longer automatically renewed. **NOTE:** Effective January 01, 2011 non-renewal was filed either by the landowner or the County for all Williamson Act contracts in Imperial.

NON-WILLIAMSON ACT LAND
 Land not enrolled in a Williamson Act contract and not mapped by Farmland Mapping & Monitoring Program (FMMP) as Urban and Built-Up Land or Water.

URBAN AND BUILT-UP LAND
 Urban and Built-Up Land is occupied by structures with a building density of at least 1 to 1.5 acres, or approximately 6 structures to a 10-acre parcel. Common examples include residential, industrial, commercial, institutional facilities, cemeteries, airports, golf courses, military facilities, sewage treatment, and water control structures. This definition and extent of mapping is derived from the latest Farmland Mapping and Monitoring Program Important Farmland Maps.

WATER
 Perennial water bodies with an extent of at least 40 acres. This definition and extent of mapping is derived from the latest Farmland Mapping and Monitoring Program Important Farmland Maps.



The California Land Conservation Act of 1965 (commonly referred to as the Williamson Act) is the State's primary program for the conservation of private land in agricultural and open space use. It is a voluntary, locally administered program that offers preferential property taxes on lands which have enforceable restrictions on their use via contracts between individual landowners and local governments. For more information on the Williamson Act please contact:

Department of Conservation
 Division of Land Resource Protection
 801 K Street, MS14-15
 Sacramento, CA 95814
 Phone: (916) 224-6850
 Email: dlrp@conservation.ca.gov
 Web page: www.conservation.ca.gov/dlrp

Maps depicting Williamson Act enrollment are produced in cooperation with the participating counties and the California Department of Conservation's Division of Land Resource Protection using Geographic Information Systems. The information used to create these maps is provided by county planning agencies and/or assessor offices. For the most accurate and up to date information regarding the status of specific contracted lands, contact the county assessor or planning agency office as the status of enrolled lands may change throughout the year.

Cultural base information was derived from public domain data sets, based upon designs of the U.S. Geological Survey, with updates generated by digitizing over current imagery.

The Department of Conservation makes no warranties as to suitability of this map for any particular purpose.
 Copyright: California Department of Conservation, Division of Land Resource Protection, 2016.