

CITIZENS IMPERIAL SOLAR

HAUL ROUTE MEMORANDUM

Date: June 2018


Prepared By:

Fusco Engineering, Inc.
6390 Greenwich Drive, Suite 170
San Diego, CA 92122
858.554.1500




Paul D. Haaland, PE

RCE 63656


Exp: 09-30-18

1. INTRODUCTION

The Citizens Imperial Solar project (hereinafter referred to as Project) consists of approximately 222.8 gross acres (172.8 acres net) and is being processed for a multiple Conditional Use Permit (CUP) within the County of Imperial.

This Haul Route Memorandum is prepared for the Project to discuss the planned construction access route to the site to assist with the County of Imperial Department of Public Works (DPW) review of the project and determination of conditions pertaining to potential road improvements.

At the time of final design of the project, a final Haul Route Study will be prepared for the Project that will discuss what road improvements, if any, are requested by DPW and will develop a cost estimate for said improvements.

Access to the Project will utilize the following roads:

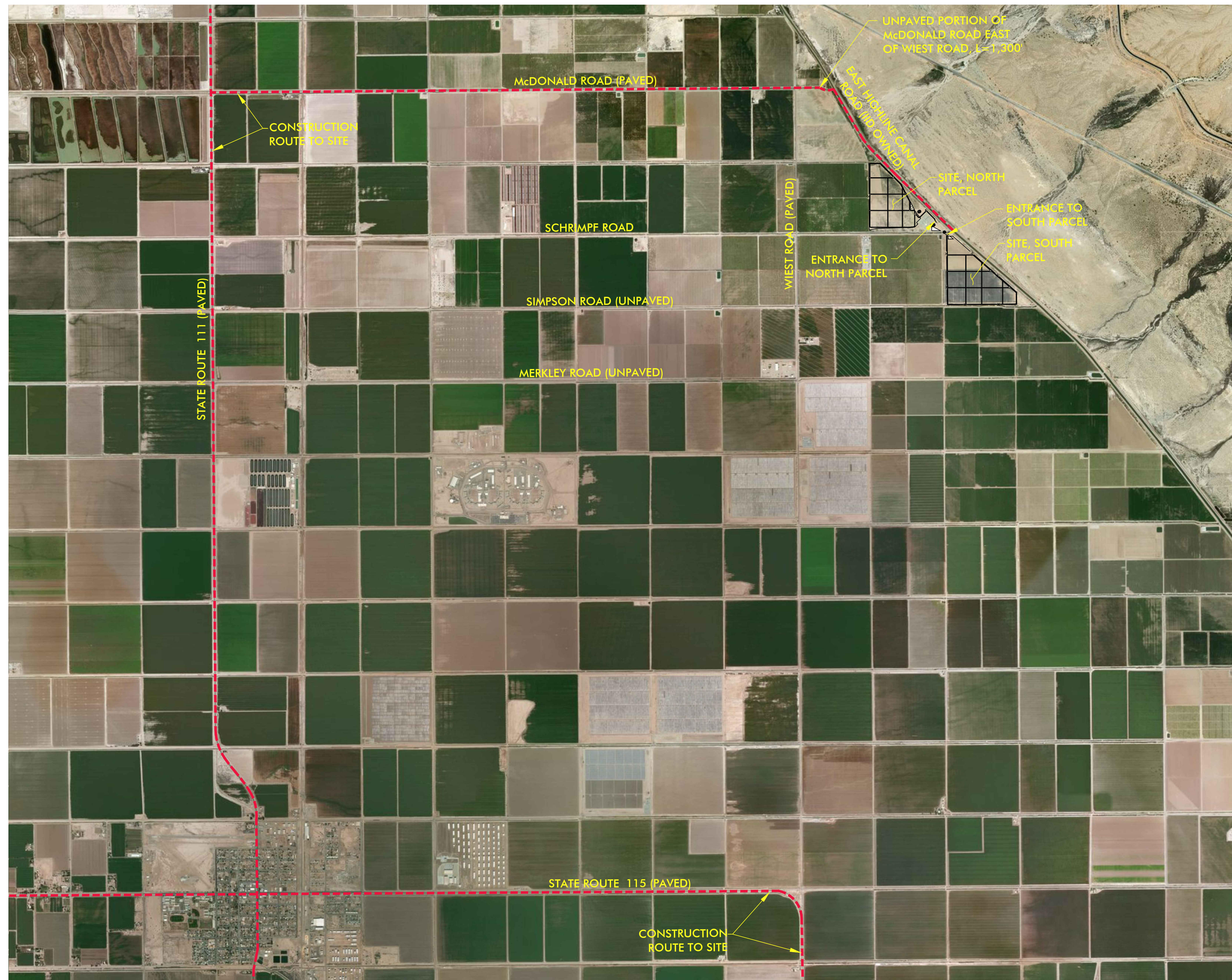
- SR-11 and SR-115 (CalTrans operated highways)
- McDonald Road east of SR-111
- Simpson Road along a portion of project frontage
- East Highline Canal Road (IID owned access road)

A Haul Route Exhibit associated with the Project is provided with this memorandum for reference. Please note that Wiest Road, Merkley Road, Schrimpf Road, and Simpson Road west of the project entrance to the south parcel are not proposed as part of the haul route for the Project.

2. EXISTING CONDITIONS

In May of 2018, the roads associated with the haul route were driven for reference and appear to be in usable condition for the project. The following is noted:

- SR-111 and SR-115 (CalTrans maintained roads) are in good condition and it is again noted that they are not maintained by the County.
- McDonald Road is paved between SR-111 and Wiest Road. East of Wiest Road, McDonald Road is unpaved.
- East highline Canal Road is unpaved and the Project owner is coordinating with the IID with respect to what improvements, if any, may be required by the IID to enable use of the project as a construction haul route.
- Simpson Road is unpaved along the project frontage



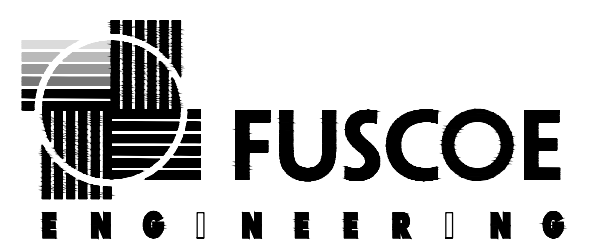
LEGEND:

--- CONSTRUCTION ROUTE TO SITE

NOTES:

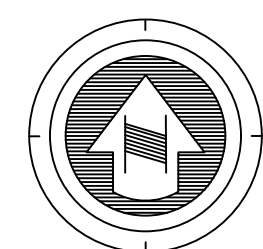
1. CONSTRUCTION TRAFFIC TO VICINITY OF SITE TO OCCUR ON STATE ROUTE 111 AND 115.
2. CONSTRUCTION TRAFFIC TO OCCUR ON McDONALD ROAD EAST OF SR-111 AND ON EAST HIGHLINE CANAL ROAD BETWEEN McDONALD ROAD AND SIMPSON ROAD
3. McDONALD ROAD IS PAVED FROM SR-111 TO WIEST ROAD (APPROXIMATELY 4 MILES) AND UNPAVED EAST OF WIEST ROAD (APPROXIMATELY 1/4 MILE)
4. EAST HIGHLINE CANAL ROAD IS UNPAVED AND OWNED BY IID
5. CONSTRUCTION TRAFFIC TO OCCUR ON SIMPSON ROAD BETWEEN EAST HIGHLINE CANAL ROAD AND THE PROJECT ENTRANCE FOR THE SOUTH PARCEL (APPROXIMATELY 100')
6. CONSTRUCTION TRAFFIC WILL NOT ACCUR ON WIEST ROAD, MERKLEY ROAD OR SHRIMP ROAD

**CITIZENS IMPERIAL SOLAR
COUNTY OF IMPERIAL
HALL ROUTE EXHIBIT**



6390 Greenwich Drive, Suite 170
San Diego, California 92122
tel 858.554.1500 • fax 858.597.0335
www.fuscoe.com

SCALE: 1"=60'
DATE: 06/06/18
SHEET 01 OF 01



2000' 0' 1000' 2000'
SCALE: 1" = 2000'