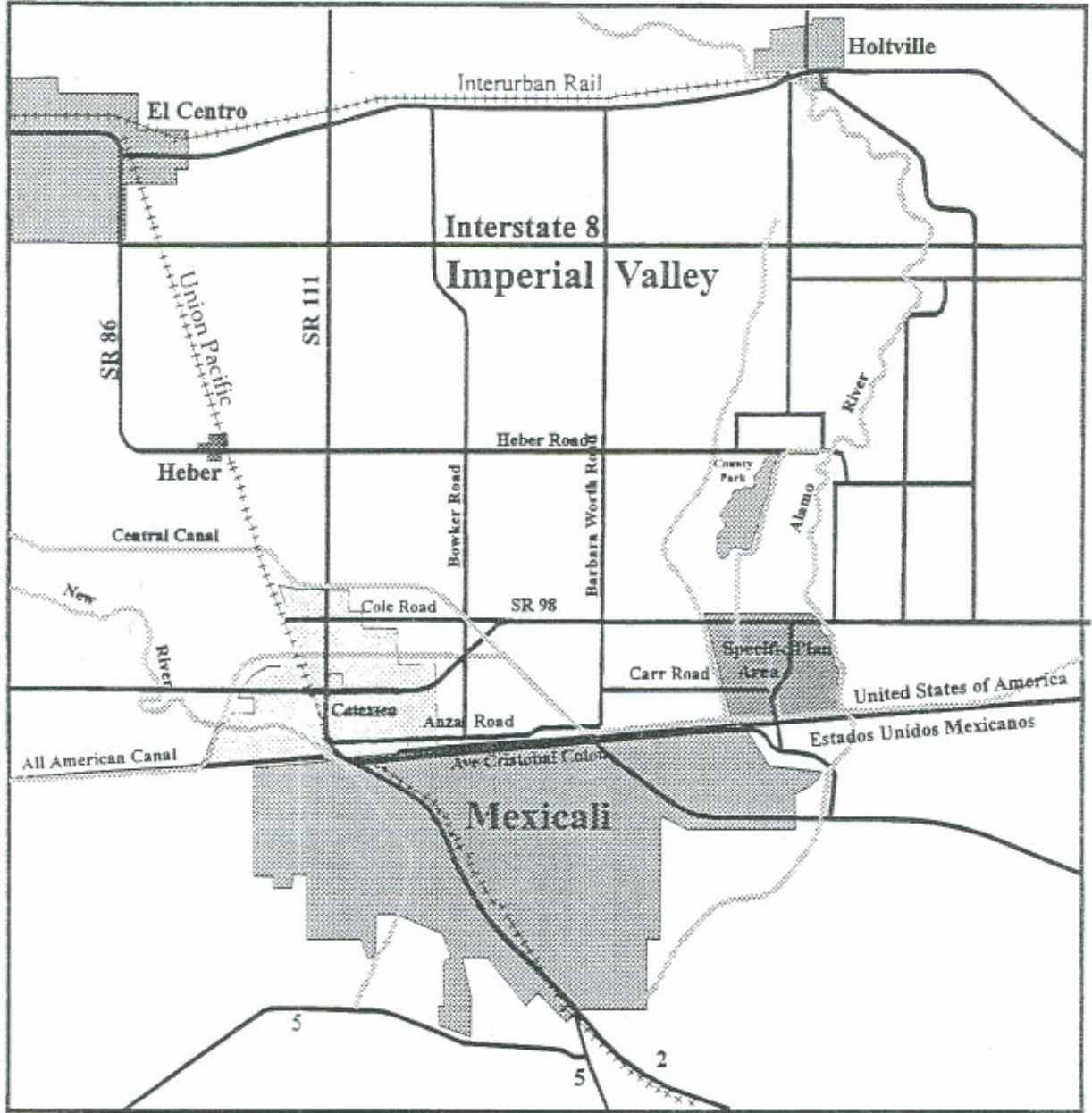


LEGEND:

- RAILROADS**
- UP - UNION PACIFIC
 - ATSF - ATCHISON, TOPEKA & SANTA FE
 - SD&E - SAN DIEGO & EASTERN
-
- NDM - FERROCARRILLES NACIONALES de MEXICO
- MAJOR ROADS**



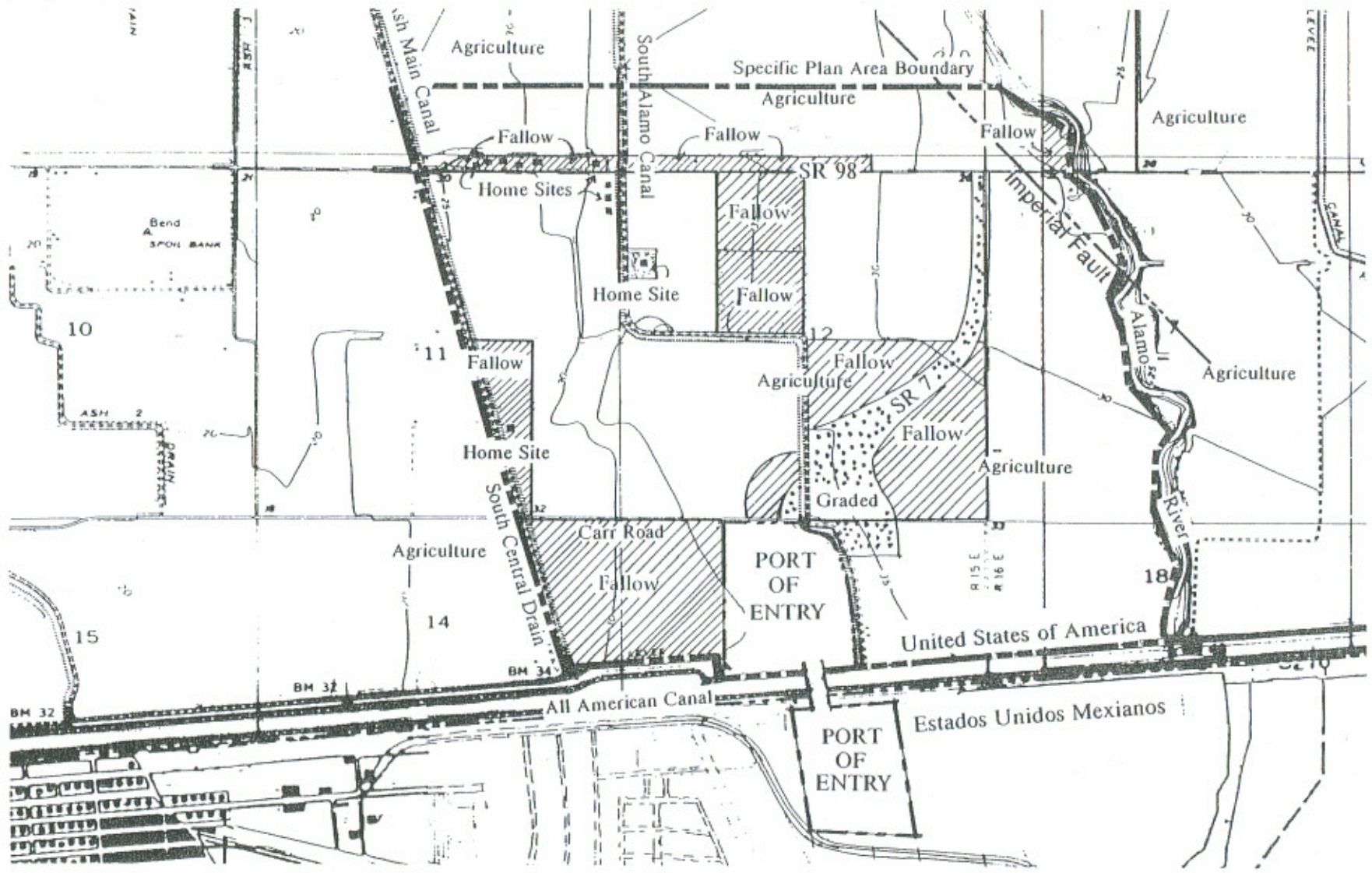
International Context Gateway Of The Americas



North
Not To Scale

Regional Conte Gateway Of The America

Exhibit No. 11



 Fallow

Existing Conditions Gateway Of The Americas



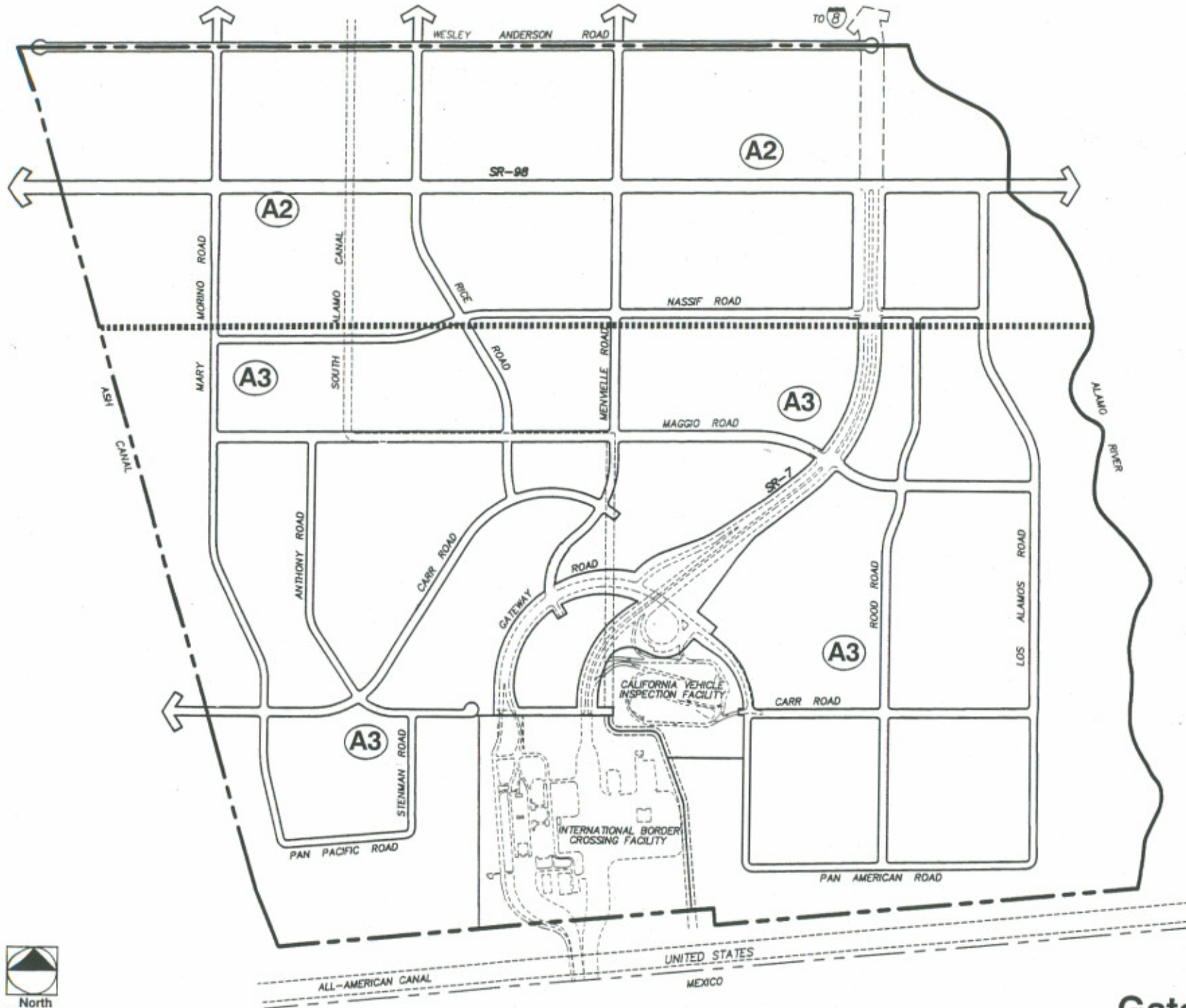
Specific Plan Area
Boundary



North
Not To Scale

Aerial Site Photo
Gateway Of The Americas

Exhibit No. II-4

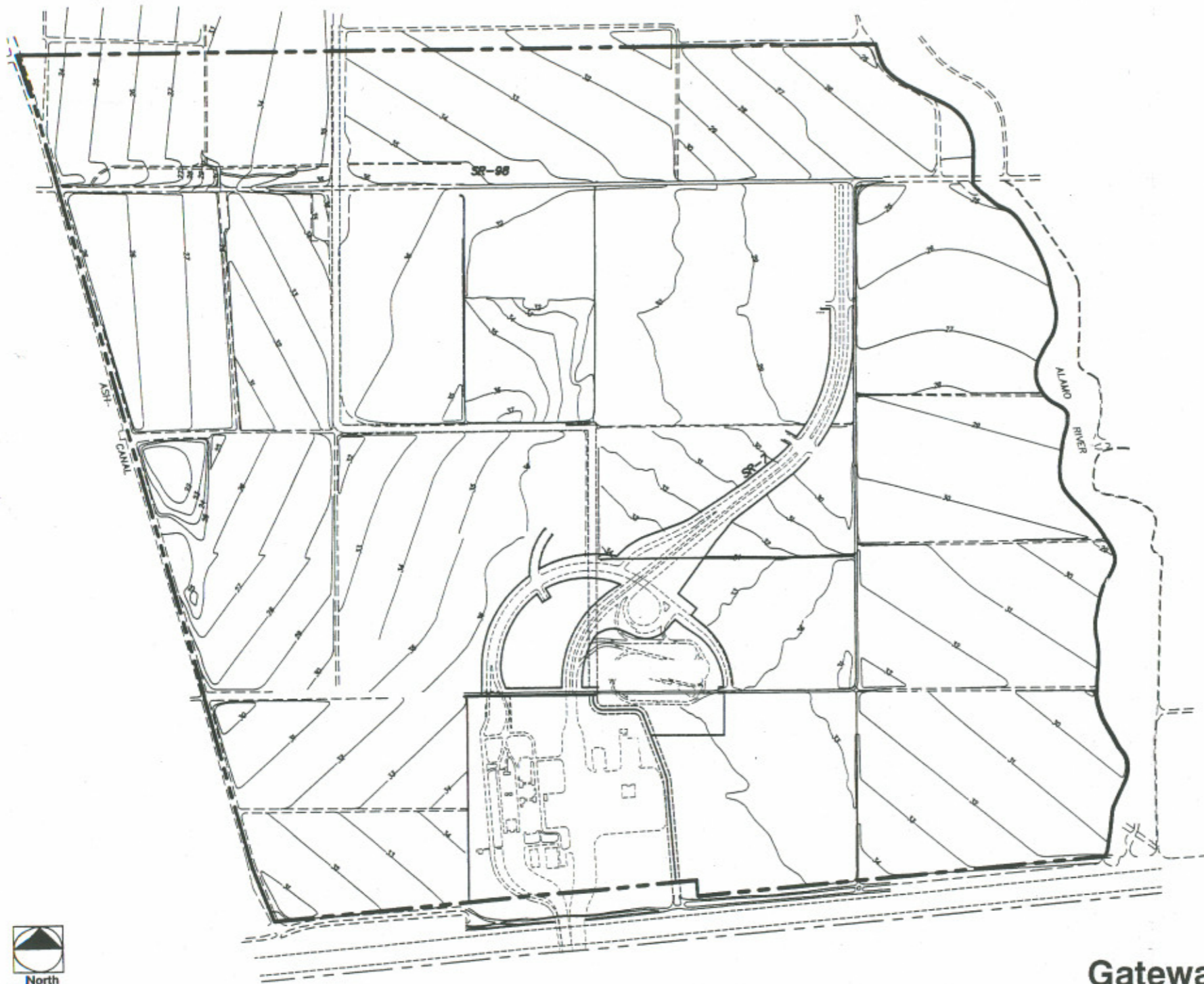


Legend

- (A2)** General Agricultural Zone
- (A3)** Heavy Agricultural Zone
- Zone Boundary

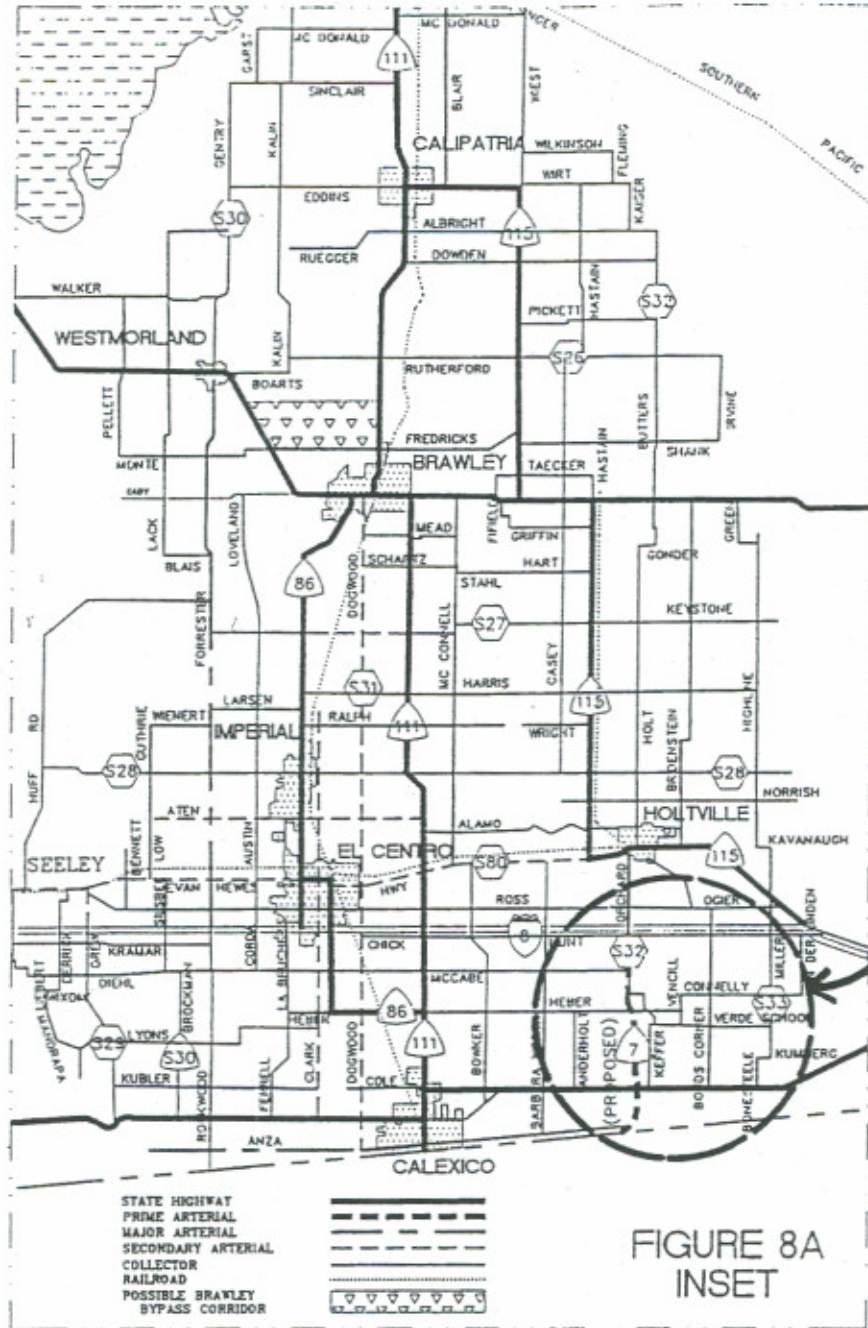
**Existing Zoning
Gateway Of The Americas**

Exhibit No. II-5

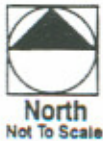


Existing Topography
Gateway Of The Americas

Exhibit No. II-6

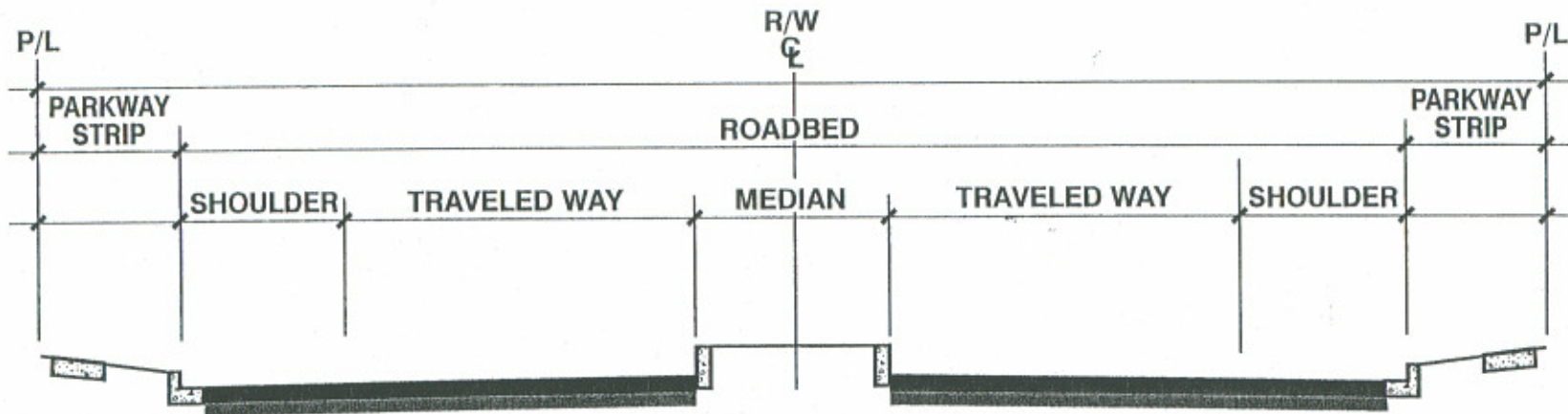


SOURCE: Willdan Associates



Gateway Plan Circulation Element Gateway Of The Americas

Exhibit No. II-7



CORRIDOR CLASSIFICATION	MEDIAN	TRAVELED WAY	SHOULDER	PARKWAY STRIP	ROADBED	R/W
PRIME ARTERIAL	18	36	8	10	106	126
MAJOR ARTERIAL	18	24	8	10	82	102
SECONDARY ARTERIAL	0	24	8	10	64	84
COLLECTOR	0	12	8	15	40	70
LOCAL	0	12	8	10	40	60
RESIDENTIAL STREET	0	12	8	10	40	60
RESIDENTIAL CUL-DE-SAC OR LOOP STREET	0	12	8	10	40	60

Imperial County Roadway and Right of Way Standards
Gateway Of The Americas